

BS0009



STARDUST

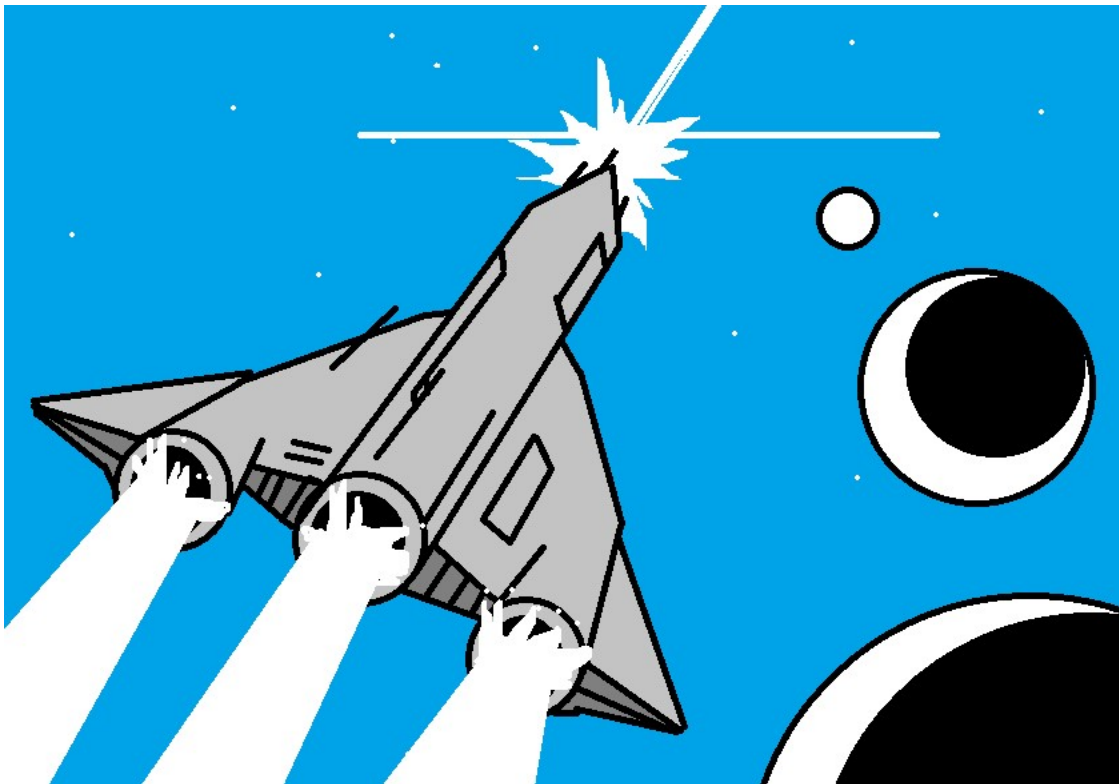
ATARI 2600

Copyright 2018 Brian Shea / [metababble.com](http://www.metababble.com)
[HTTP://WWW.METALBABBLE.COM/](http://www.metababble.com/)

The Story

Deep in distant space, intergalactic war has broken out! The dark queen has sent her most notorious generals to overtake planets in the peaceful alliance system.

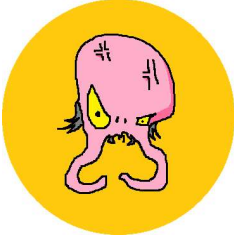
Your mission is to travel to these worlds, defeat the generals, and return safely to the star base!



THANK YOU FOR PLAYING STARDUST FOR ATARI 2600



The Dark Queen's Army

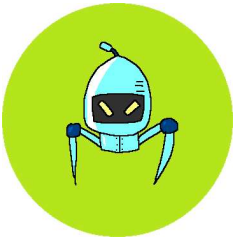


Clone Invader

An alien lifeform capable of making multiple copies of itself. Its species replicates and spreads like locust throughout the galaxy.

LIKES: Space Exploration

DISLIKES: Laser Blasts

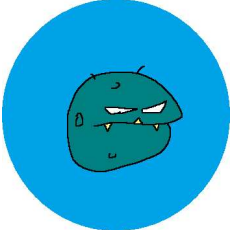


Robot 07-PT prime

Once a bounty hunter, now a cunning warrior for the dark queen used for special Ops.

LIKES: Complex binary operations

DISLIKES: Cold weather



Graviton

A giant sentient blob of mass that produces gravity waves to stun its enemies. Graviton is capable of digesting small planets by collapsing their mass with its gravity.

LIKES: Star Gazing

DISLIKES: Dieting

Star fighter pilots will be rewarded with powerups and upgrades for the defeat of these nefarious characters!



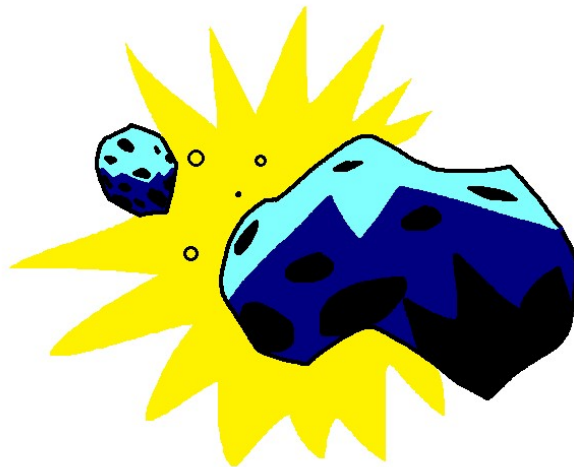
How to Play

On your mission, you will be in control of a cruiser-class space fighter. Use the joystick to maneuver the ship through space, using your navigation computer as a guide. In space, you will encounter asteroids, space debris, and even hostile alien combatants.

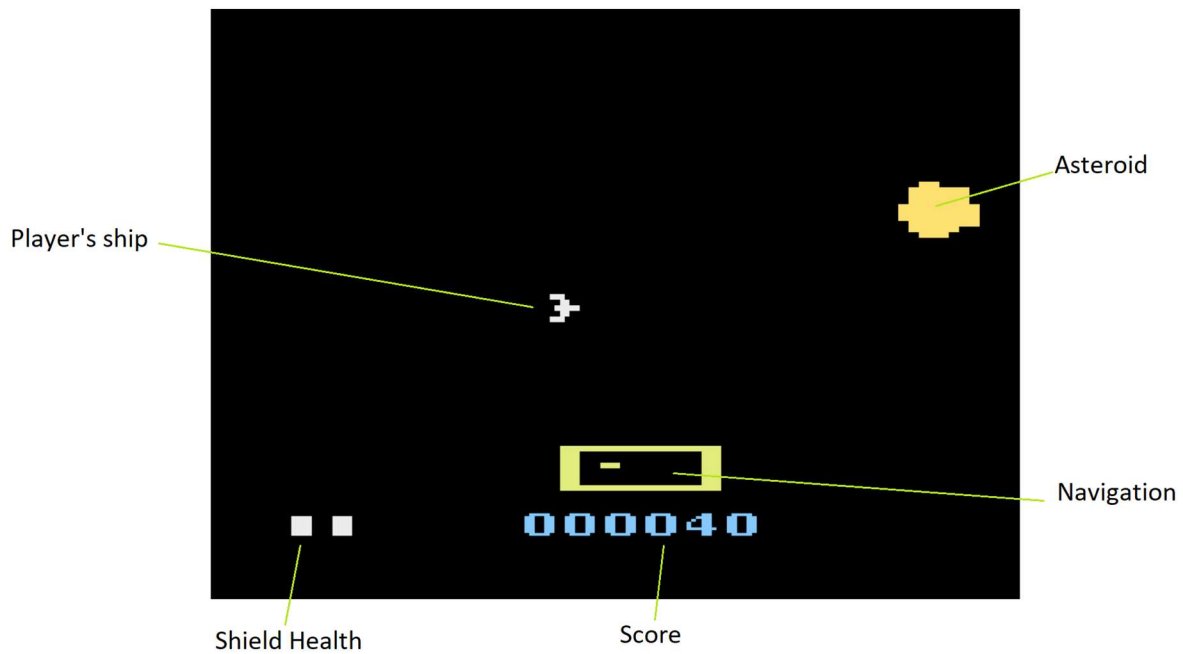
Upon reaching the planets of the alliance system you will enter into a battle with the invading general.

The cruiser ship is equipped with powerful laser torpedoes and a shield system. If the cruiser comes in contact with enemies or asteroids the shield will take damage. If the shield health is completely depleted, your ship will be destroyed and the mission will fail.

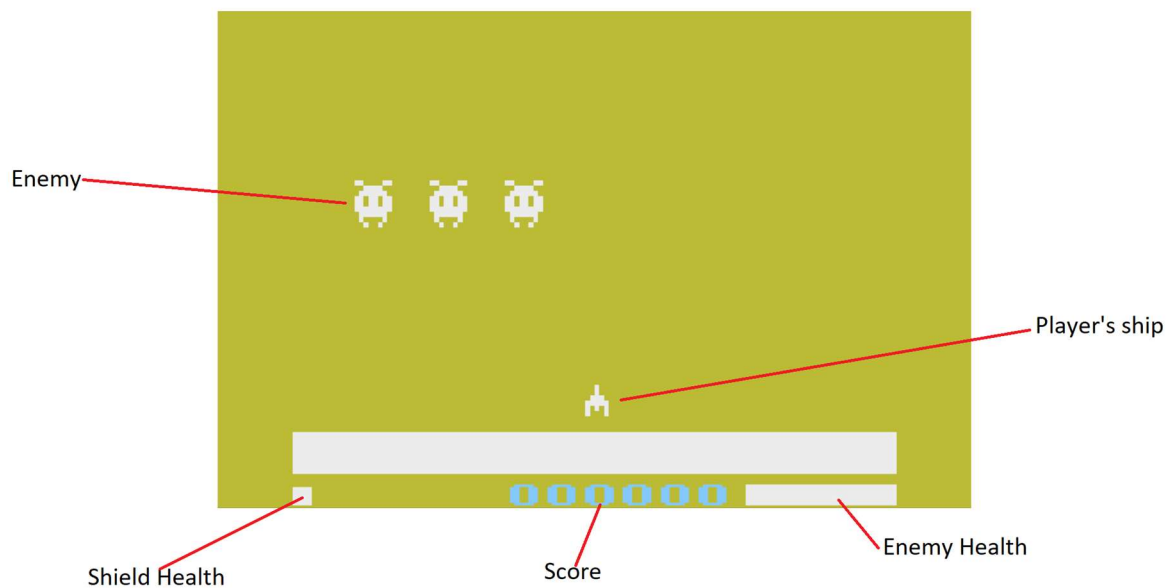
While fighting the generals, you will see their health meter on the lower-right of the screen. If you defeat a general you will receive a power up bonus. After defeating all of the generals, report back to the starting base planet to complete your mission!



The Game Screen



Upon reaching a planet you will enter battle mode, as shown below...



Controls

Joystick – Movement (Note that in battle mode, movement is horizontal only.)

Fire button – Fires laser torpedoes. Also used to start a new game.

Use the reset switch to start, or restart the game.

Power ups

Here are some of the power up rewards for defeating the evil queen's generals...

- **Hologram generator** – creates a hologram ship that fights by your side.
- **Double-hologram generator** – creates two ships that fight by your side.
- **Extra points & shield power** – Your shield is upgraded and can take additional hits.



Tips

- After taking damage from an enemy you will be invincible for a few moments – take advantage of this!
- Watch out! If the cruiser comes into contact with a general, the cruiser will be instantly destroyed.
- Return to the base to repair your shields.
- Due to their orbit, the location of the planets will change with each new game.
- While traveling in space, note that the navigation computer represents 4 adjacent screens with one dot on the map.
- Space contains mysterious “dark matter” which will produce different effects when encountered. Sometimes asteroids will produce dark matter when destroyed.



STARDUST

Created by Brian Shea

<http://www.metalbabble.com/>

